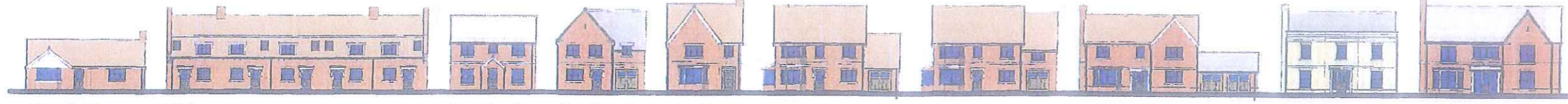


Proposed House Types

1 : 250



House Type 1
3BH 1100sqft

Almshouse
5no. 2BH 980sqft

House Type 3
2BH 1001sqft

House Type 4A
3BH 1340sqft

House Type 5
3BH 1277sqft

House Type 6
4BH 1625sqft

House Type 6A
4BH 1905sqft

House Type 7
4BH 1830sqft

House Type 8
4BH 1722sqft

House Type 9
4BH 2282sqft



Affordable Housing
2N° 2BH 624sqft each
1N° 3BH 754sqft

P01	PLANNING ISSUE	19/11/16	BW / BW
P02	Moors Lane reference updated	13/12/16	BW / BW
P03	Site Drainage Provision included	24/01/17	BW / BW
P04	Updated civils construction	27/01/17	BW / BW
P05	Road agreement to civil engineers drafted	02/02/17	BW / BW
P06	Plot 42 Relocated to generate Public Open Space	07/02/17	BW / BW
P07	Updated following Planning Committee	03/04/17	BW / BW
P08	Updated to Planning Guidance	05/04/17	BW / BW

ADMIRALS FARM HOUSING MIX

HT	DESCRIPTION	Qty	AREA	GARAGES SIZE	SHARED X2 Plots:	STANDALONE Plots:	INTEGRATED Plots:
HT-1	2 Bedroom bungalow	6 N°	1100 sqft	SINGLE	4, 25, 32, 33, 41, 42	22, 40, 41	
HT-2	2 bedroom house	5 N°	980 sqft				
HT-3	2 bedroom house	4 N°	1001 sqft		6		
HT-4A	3 bedroom house	4 N°	1340 sqft	SINGLE		9, 20, 35, 38	
HT-5	3 bedroom house	5 N°	1277 sqft	SINGLE	4, 7, 24	15, 36	
HT-6	4 bedroom house	2 N°	1625 sqft	SINGLE			13, 50
HT-6A	4 bedroom house	3 N°	1905 sqft	SINGLE			5, 26, 45
HT-7	4 bedroom house	7 N°	1830 sqft	DOUBLE			2, 11, 34, 37, 39, 44, 49
HT-8	4 bedroom house	5 N°	1722 sqft	DOUBLE		1, 6, 10, 43, 47	
HT-9	4 bedroom house	3 N°	2282 sqft	DOUBLE		12, 46, 48	
HT-10	2/3 Bed affordable	3 N°	2002 sqft				
Total		60 N°	69,782 sqft				

For boundary treatments and soft landscaping details please refer to Landscaping Drawing: 16.2030.08 Proposed Landscape Plan

SURFACE TYPES

- ROADS
- FOOTPATHS
- DRIVES / RAISED TABLES
- PRIVATE GARDENS
- PUBLIC OPEN SPACE (0.65 Ha at 11.7% of Total Site Area)

TOTAL SITE AREA: 5.6 Ha



Admirals Farm Proposed Site Plan

1 : 1000



Hills Building Group

Admirals Farm Residential Development, Great Bentley

Proposed Site Block Plan

3522 - 0011 P08

As indicated @ A1 S2 PLANNING

16.2030.08 27.06.16 DR: A 0011

