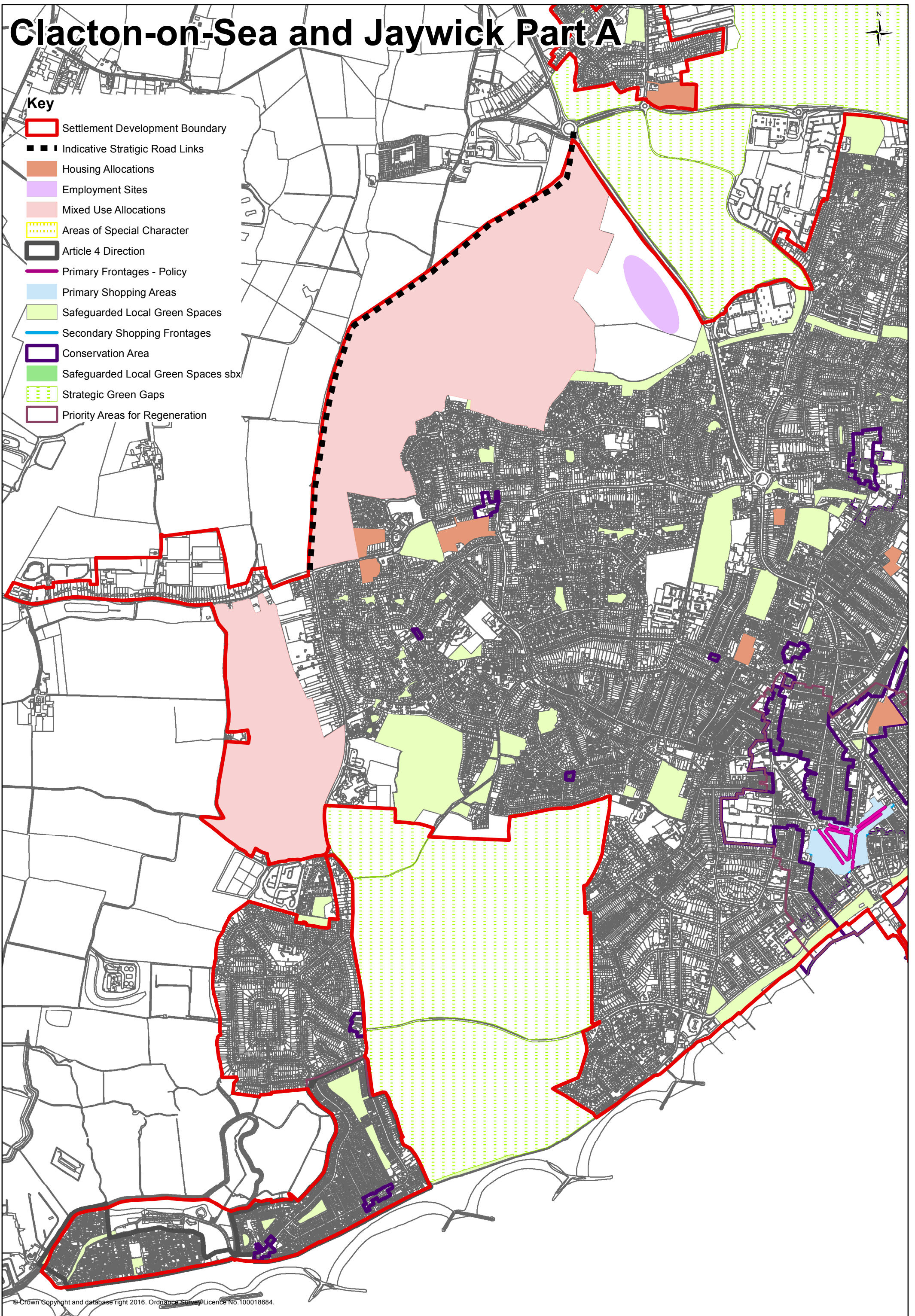


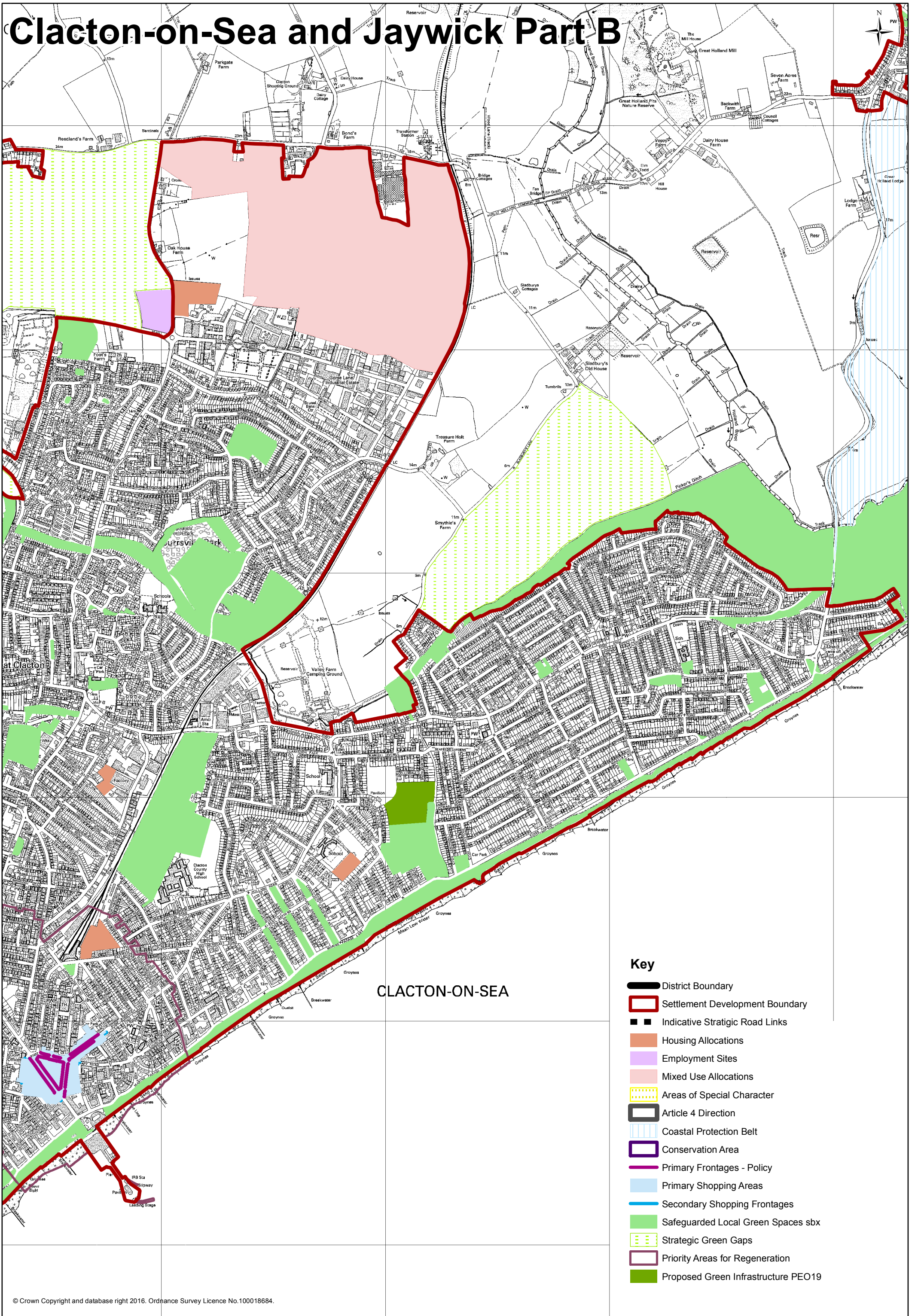
Clacton-on-Sea and Jaywick Part A

Key

- Settlement Development Boundary
- Indicative Strategic Road Links
- Housing Allocations
- Employment Sites
- Mixed Use Allocations
- Areas of Special Character
- Article 4 Direction
- Primary Frontages - Policy
- Primary Shopping Areas
- Safeguarded Local Green Spaces
- Secondary Shopping Frontages
- Conservation Area
- Safeguarded Local Green Spaces sbx
- Strategic Green Gaps
- Priority Areas for Regeneration



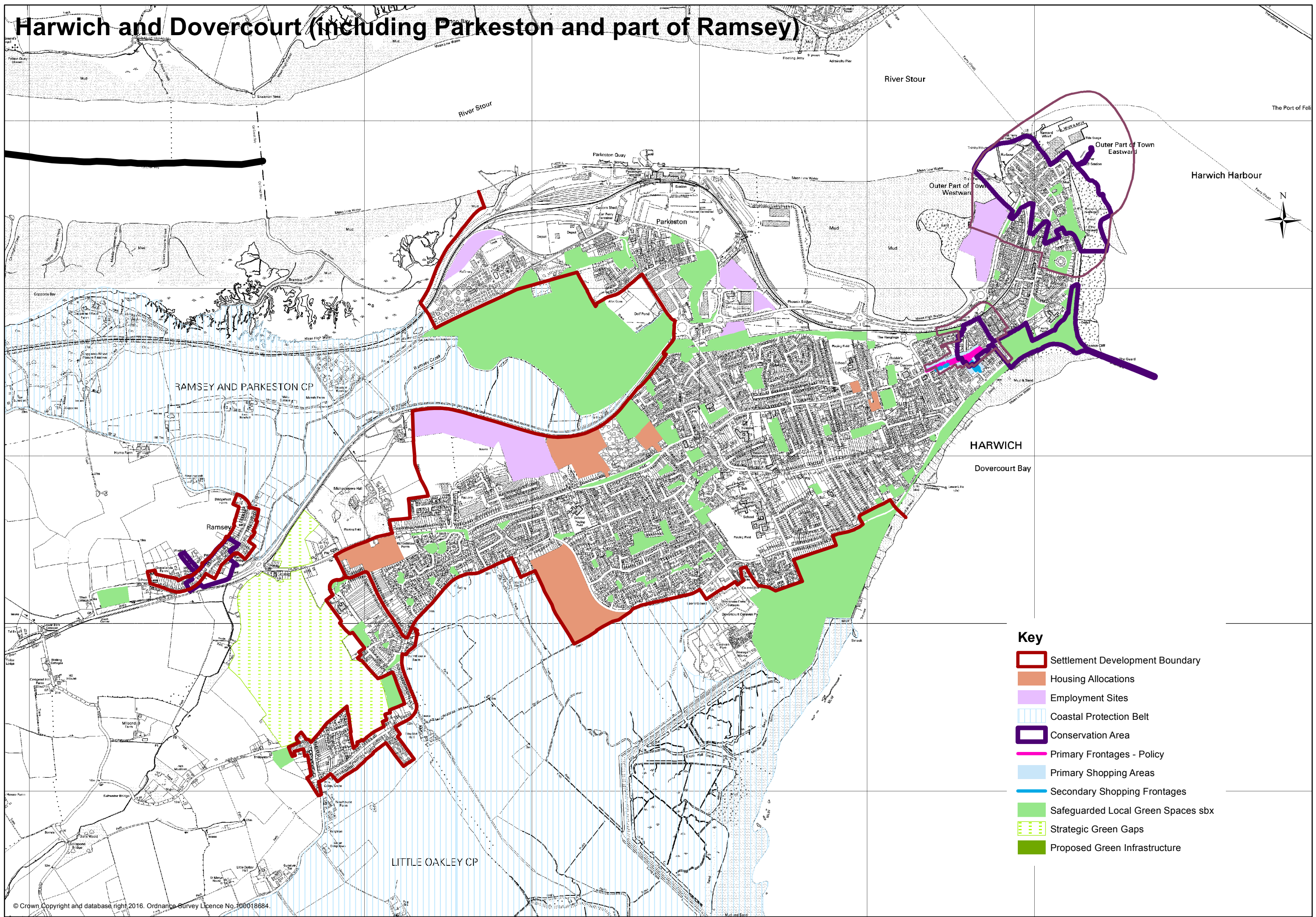
Clacton-on-Sea and Jaywick Part B



Key

- District Boundary
- Settlement Development Boundary
- Indicative Strategic Road Links
- Housing Allocations
- Employment Sites
- Mixed Use Allocations
- Areas of Special Character
- Article 4 Direction
- Coastal Protection Belt
- Conservation Area
- Primary Frontages - Policy
- Primary Shopping Areas
- Secondary Shopping Frontages
- Safeguarded Local Green Spaces sbx
- Strategic Green Gaps
- Priority Areas for Regeneration
- Proposed Green Infrastructure PEO19

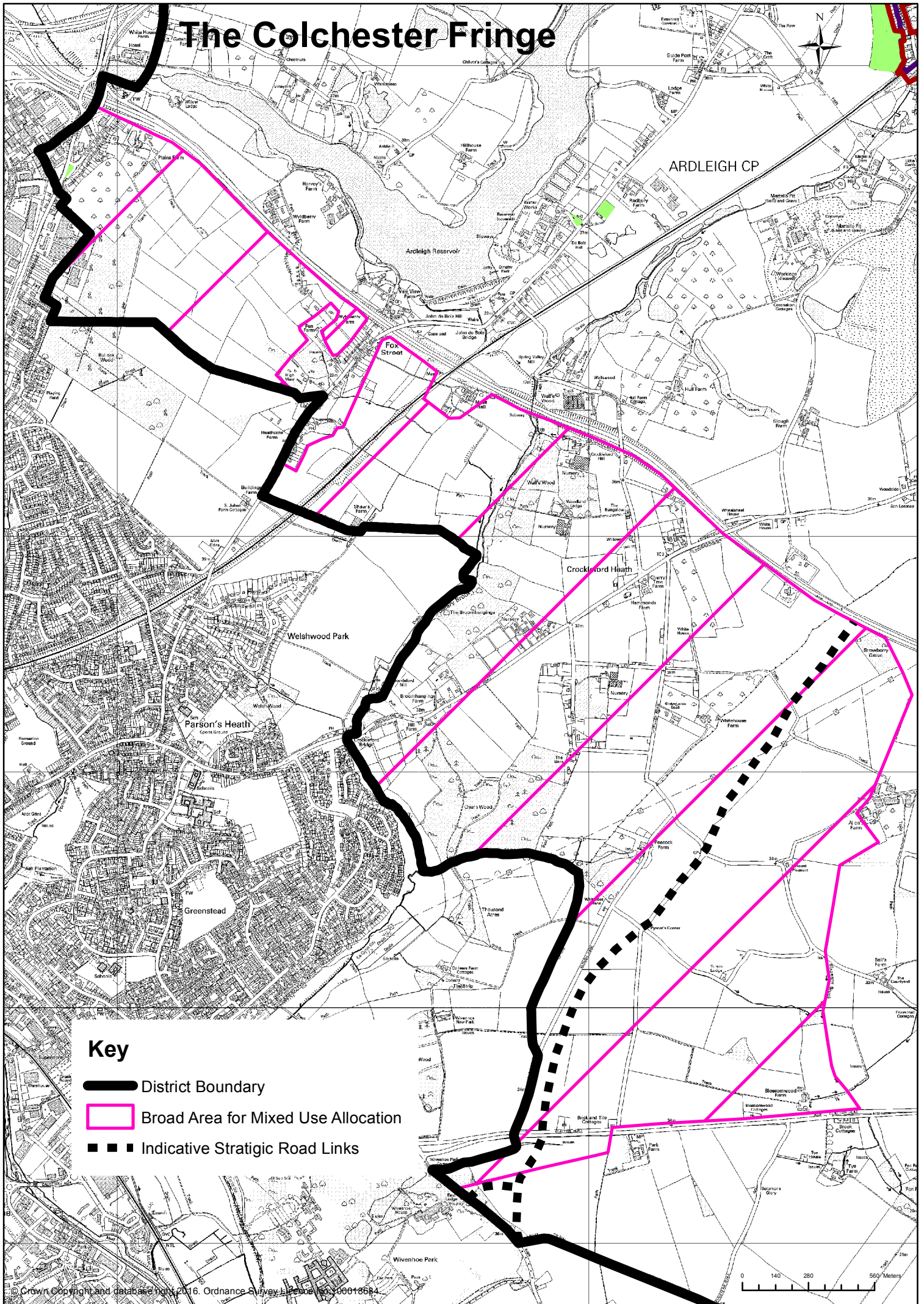
Harwich and Dovercourt (including Parkeston and part of Ramsey)






Key

- Settlement Development Boundary
- Housing Allocations
- Employment Sites
- Coastal Protection Belt
- Conservation Area
- Primary Frontages - Policy
- Primary Shopping Areas
- Secondary Shopping Frontages
- Safeguarded Local Green Spaces sbx
- Strategic Green Gaps
- Proposed Green Infrastructure

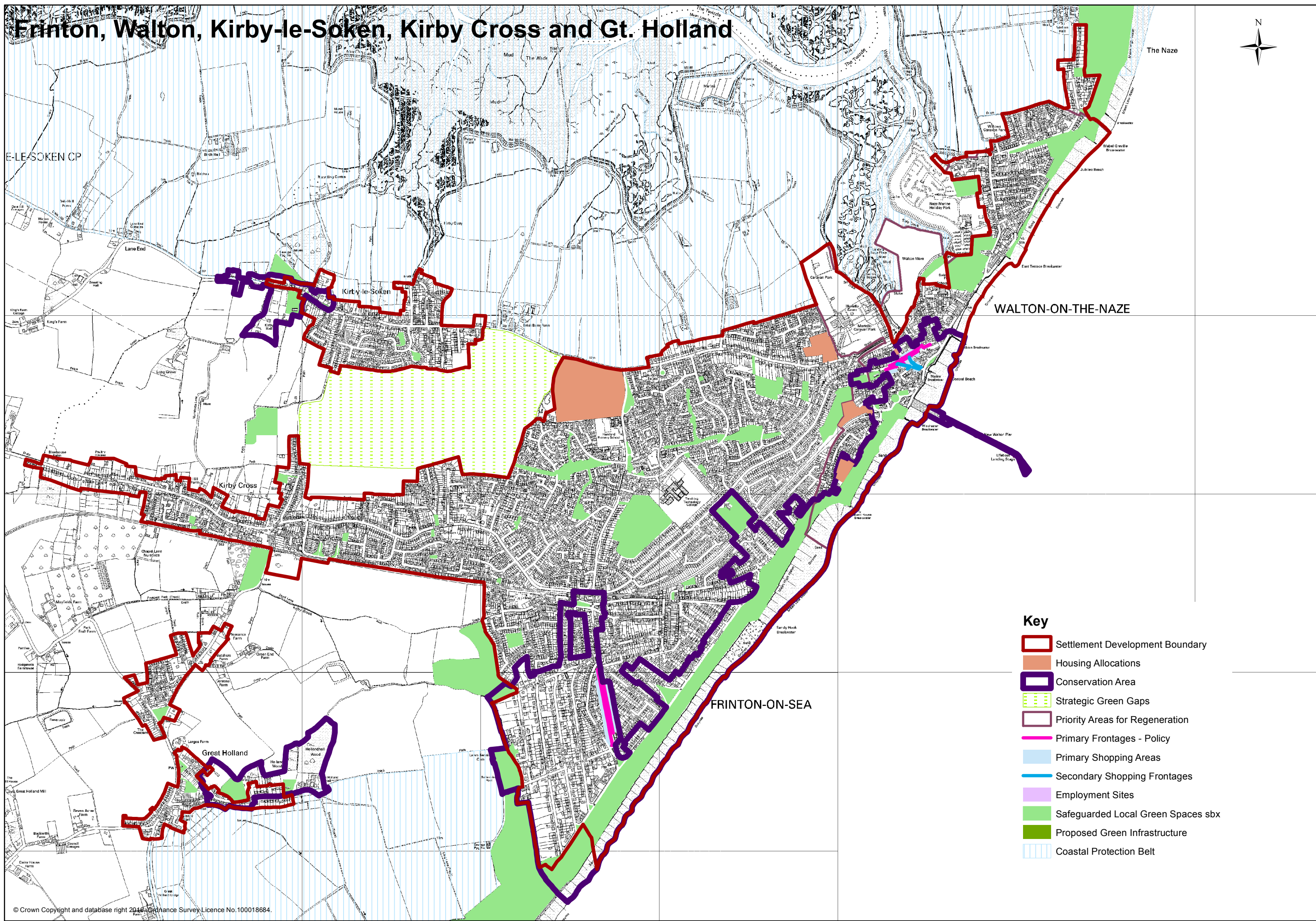
The Colchester Fringe



Key

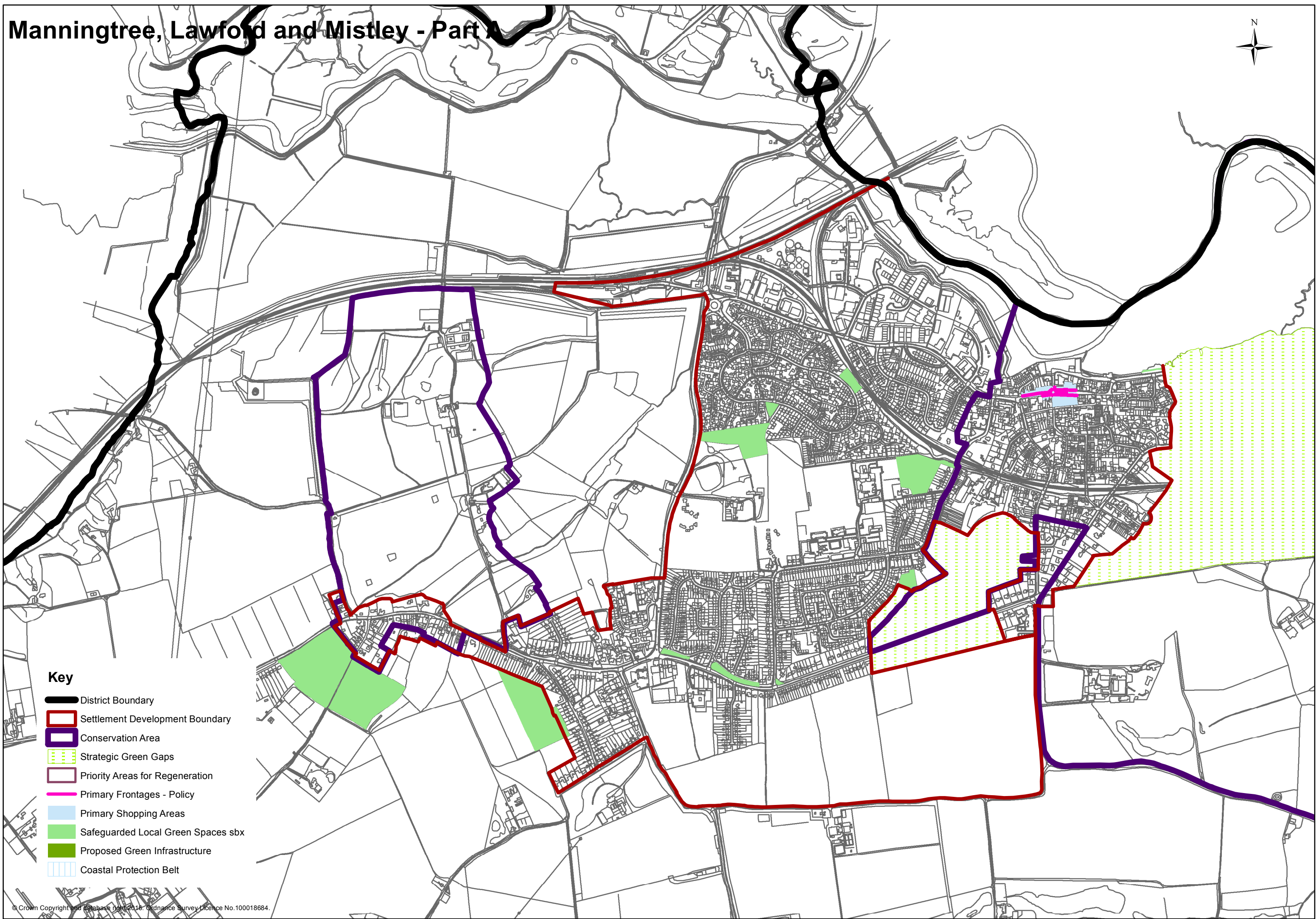
-  District Boundary
-  Broad Area for Mixed Use Allocation
-  Indicative Strategic Road Links

Frinton, Walton, Kirby-le-Soken, Kirby Cross and Gt. Holland



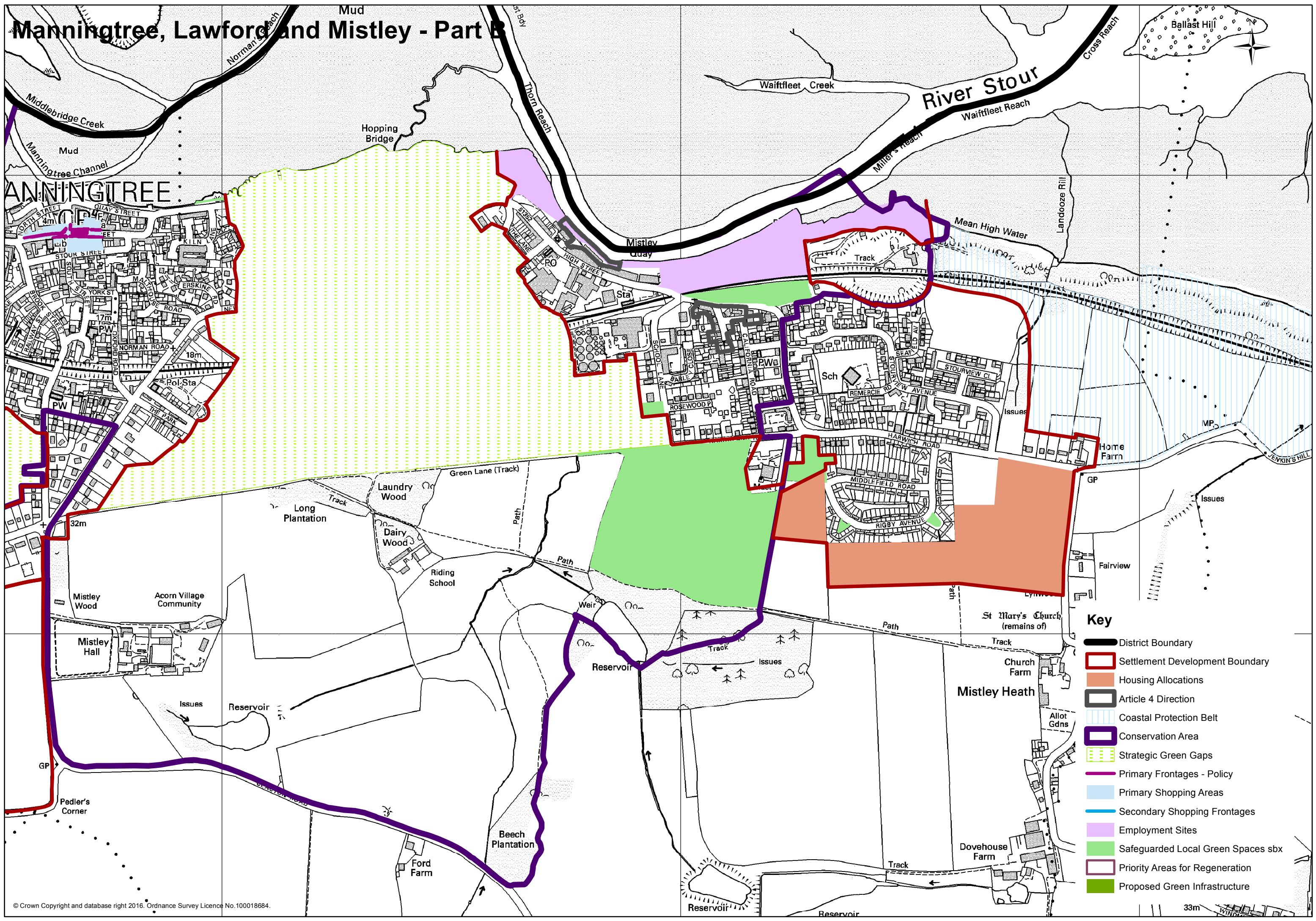
- Key**
- Settlement Development Boundary
 - Housing Allocations
 - Conservation Area
 - Strategic Green Gaps
 - Priority Areas for Regeneration
 - Primary Frontages - Policy
 - Primary Shopping Areas
 - Secondary Shopping Frontages
 - Employment Sites
 - Safeguarded Local Green Spaces sbx
 - Proposed Green Infrastructure
 - Coastal Protection Belt

Manningtree, Lawford and Mistlely - Part A



- Key**
- District Boundary
 - Settlement Development Boundary
 - Conservation Area
 - Strategic Green Gaps
 - Priority Areas for Regeneration
 - Primary Frontages - Policy
 - Primary Shopping Areas
 - Safeguarded Local Green Spaces sbx
 - Proposed Green Infrastructure
 - Coastal Protection Belt

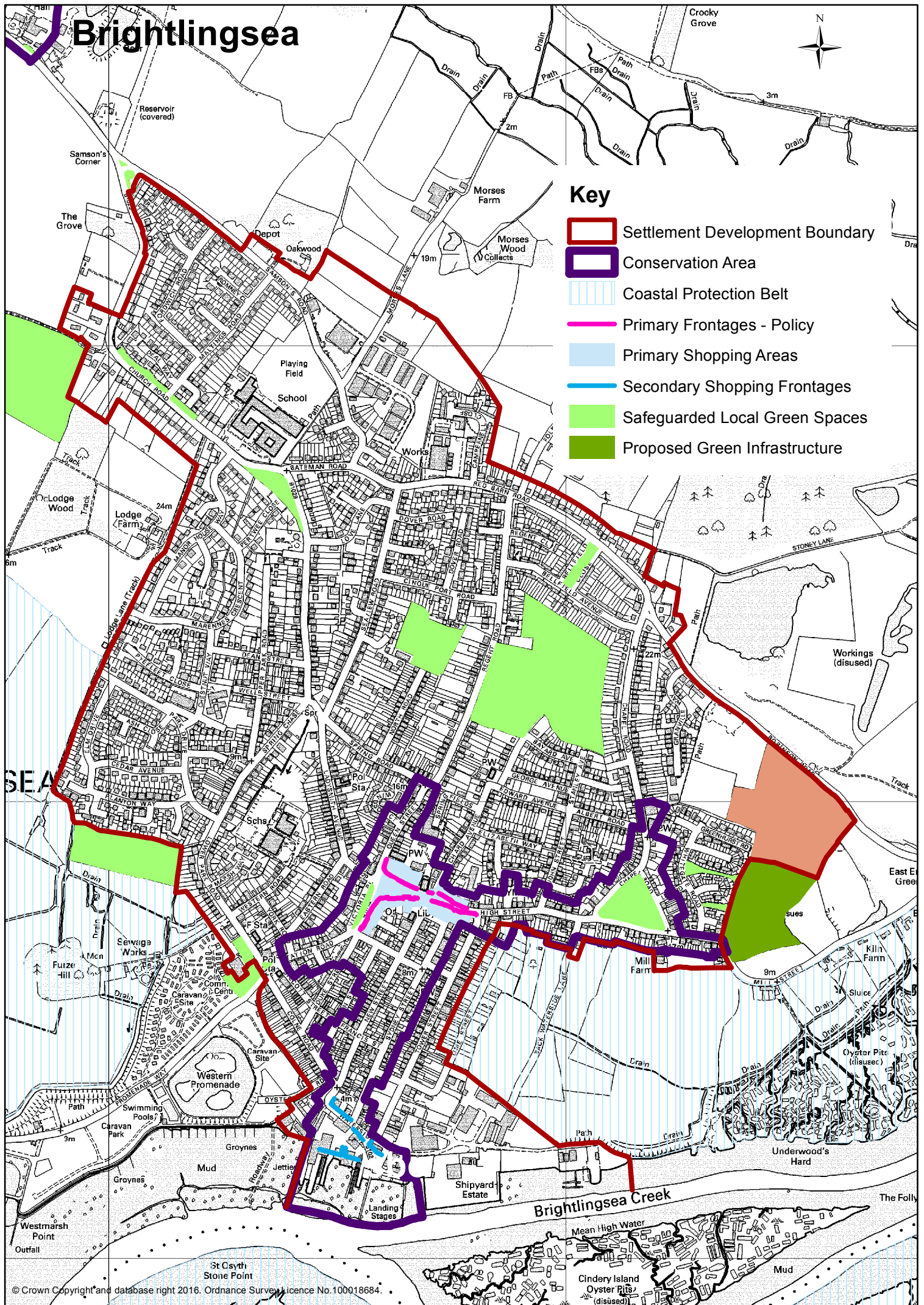
Manningtree, Lawford and Mistley - Part B



Key

- District Boundary
- Settlement Development Boundary
- Housing Allocations
- Article 4 Direction
- Coastal Protection Belt
- Conservation Area
- Strategic Green Gaps
- Primary Frontages - Policy
- Primary Shopping Areas
- Secondary Shopping Frontages
- Employment Sites
- Safeguarded Local Green Spaces sbx
- Priority Areas for Regeneration
- Proposed Green Infrastructure

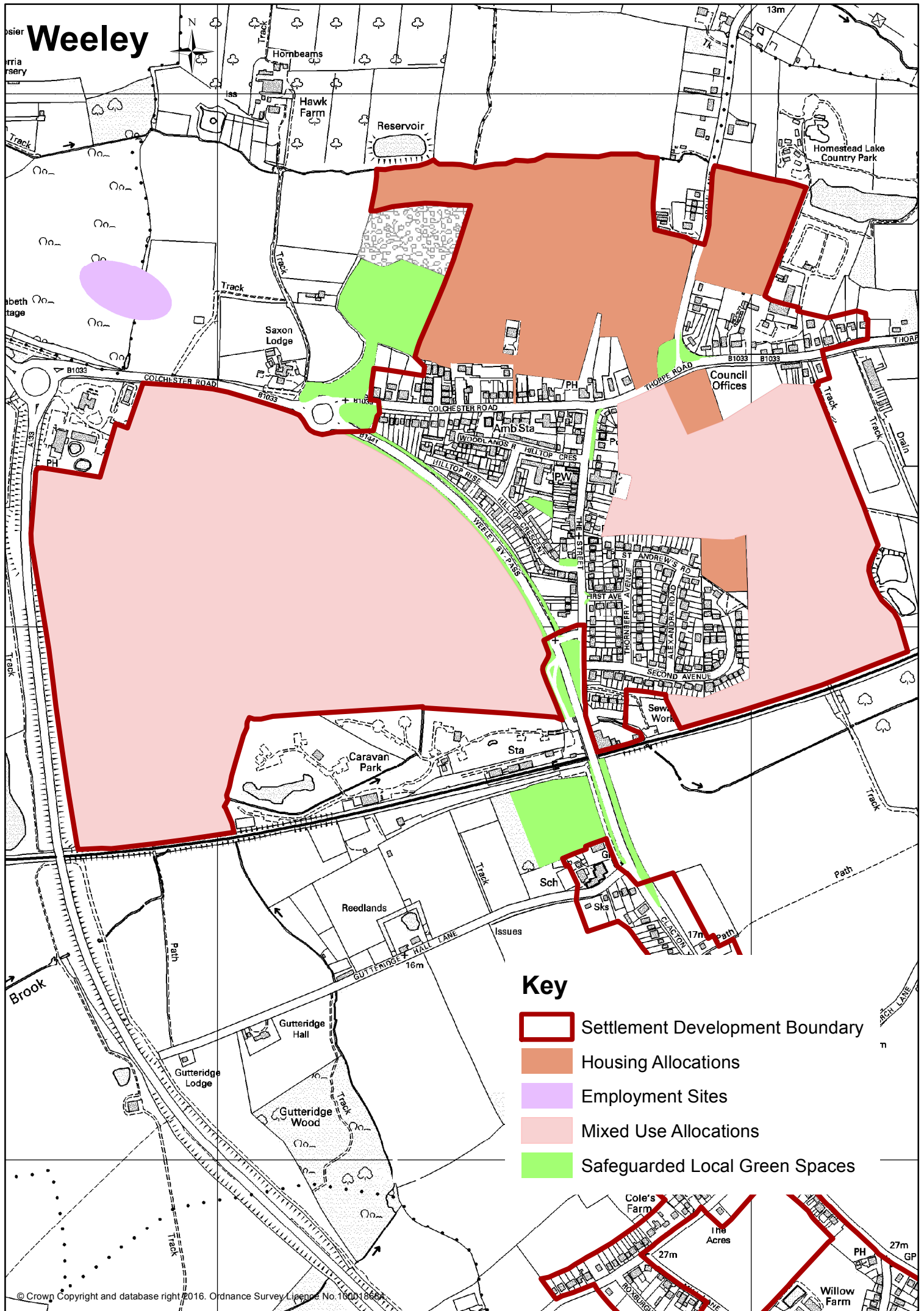
Brightlingsea



Key

- Settlement Development Boundary
- Conservation Area
- Coastal Protection Belt
- Primary Frontages - Policy
- Primary Shopping Areas
- Secondary Shopping Frontages
- Safeguarded Local Green Spaces
- Proposed Green Infrastructure

Weeley



Key

- Settlement Development Boundary
- Housing Allocations
- Employment Sites
- Mixed Use Allocations
- Safeguarded Local Green Spaces