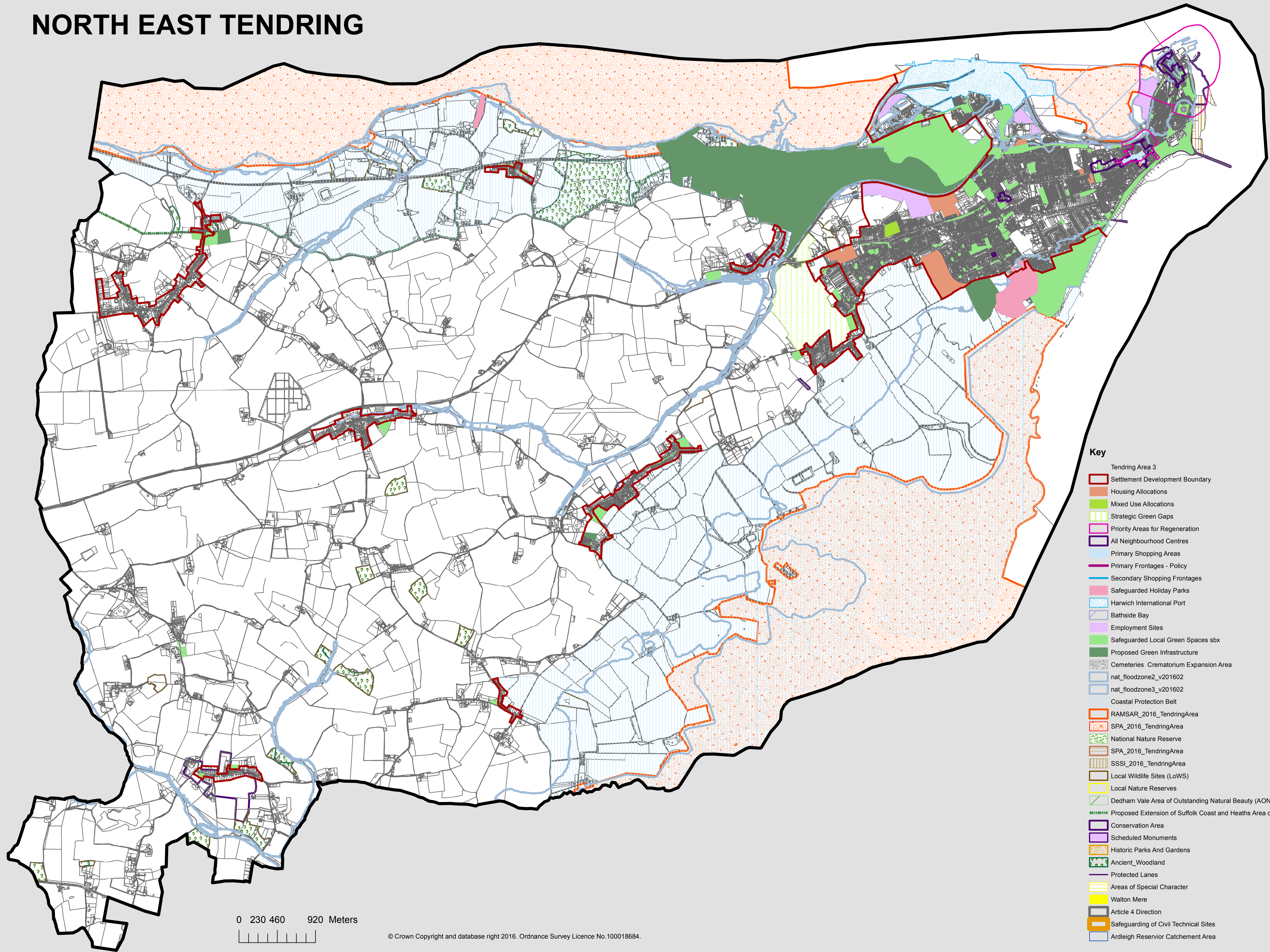
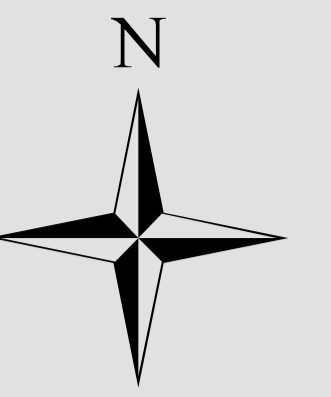


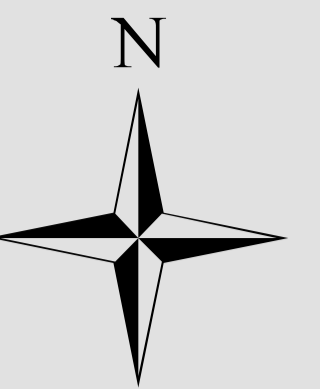
NORTH EAST TENDRING



- Key**
- Tending Area 3
 - Settlement Development Boundary
 - Housing Allocations
 - Mixed Use Allocations
 - Strategic Green Gaps
 - Priority Areas for Regeneration
 - All Neighbourhood Centres
 - Primary Shopping Areas
 - Primary Frontages - Policy
 - Secondary Shopping Frontages
 - Safeguarded Holiday Parks
 - Harwich International Port
 - Bathside Bay
 - Employment Sites
 - Safeguarded Local Green Spaces sbx
 - Proposed Green Infrastructure
 - Cemeteries Crematorium Expansion Area
 - nat_floodzone2_v201602
 - nat_floodzone3_v201602
 - Coastal Protection Belt
 - RAMSAR_2016_TendingArea
 - SPA_2016_TendingArea
 - National Nature Reserve
 - SPA_2016_TendingArea
 - SSSI_2016_TendingArea
 - Local Wildlife Sites (LoWS)
 - Local Nature Reserves
 - Dedham Vale Area of Outstanding Natural Beauty (AONB)
 - Proposed Extension of Suffolk Coast and Heaths Area of Outstanding Natural Beauty (AONB)
 - Conservation Area
 - Scheduled Monuments
 - Historic Parks And Gardens
 - Ancient Woodland
 - Protected Lanes
 - Areas of Special Character
 - Walton Mere
 - Article 4 Direction
 - Safeguarding of Civil Technical Sites
 - Ardleigh Reservoir Catchment Area

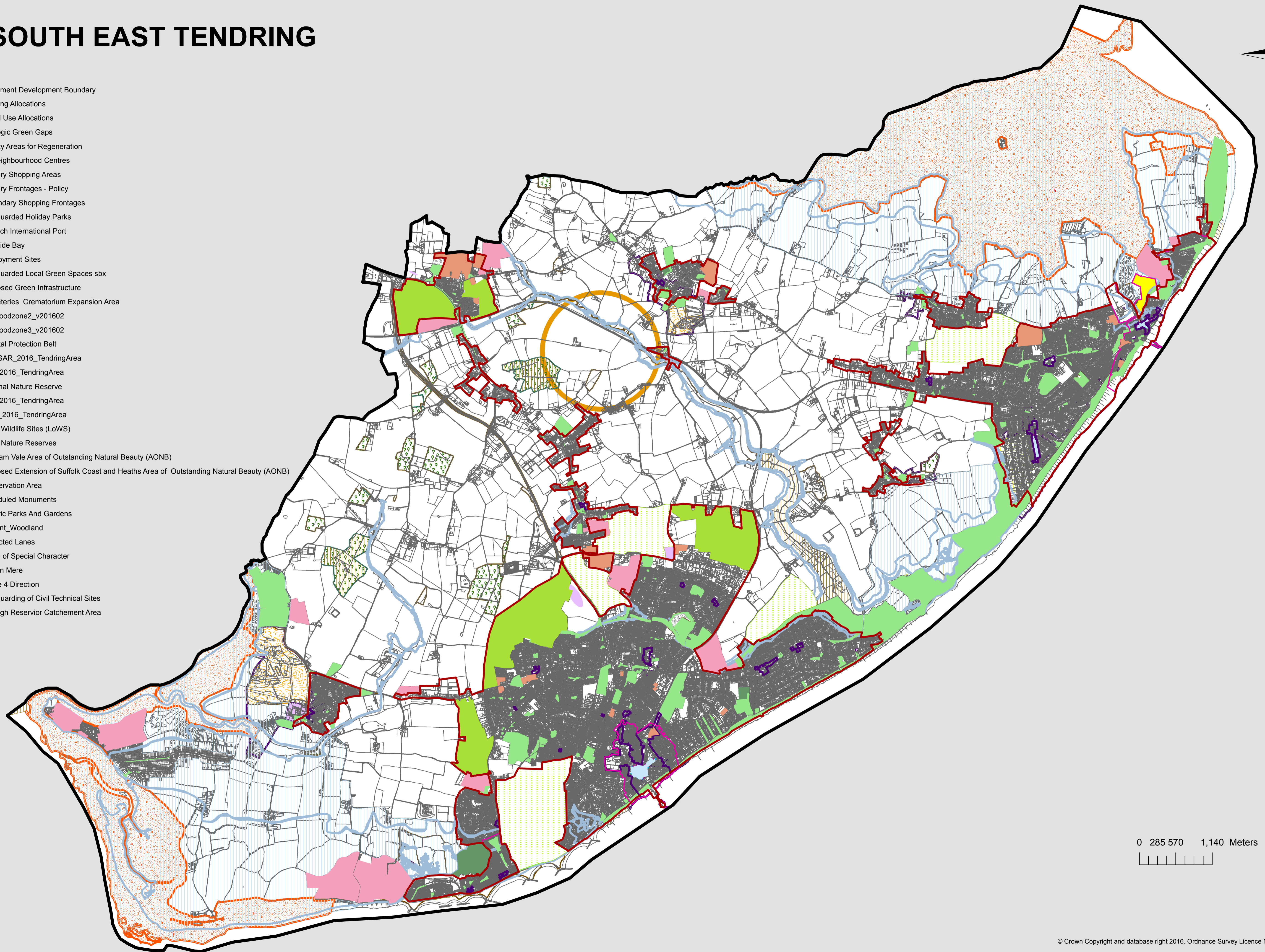
0 230 460 920 Meters

SOUTH EAST TENDRING



Key

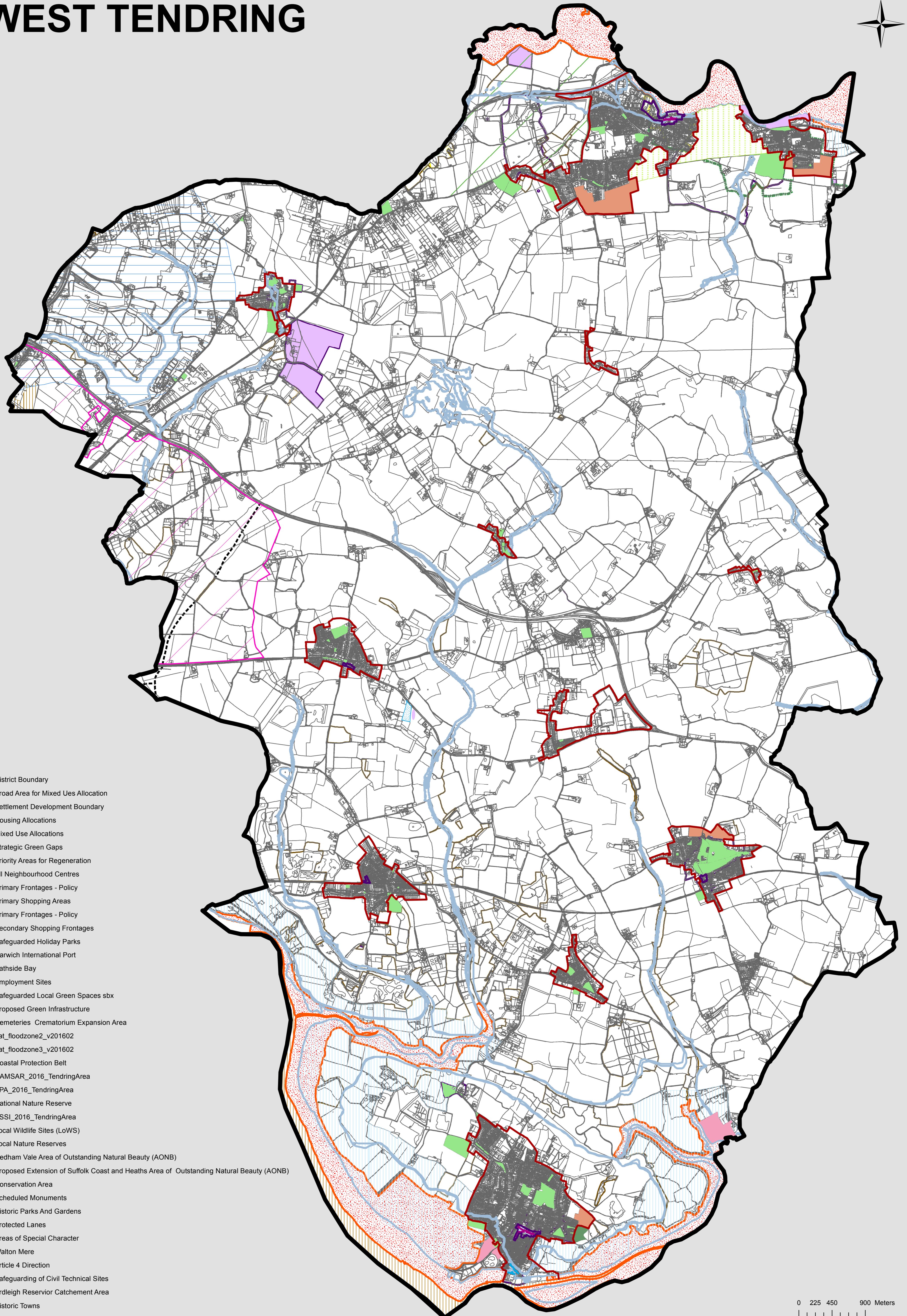
- Settlement Development Boundary
- Housing Allocations
- Mixed Use Allocations
- Strategic Green Gaps
- Priority Areas for Regeneration
- All Neighbourhood Centres
- Primary Shopping Areas
- Primary Frontages - Policy
- Secondary Shopping Frontages
- Safeguarded Holiday Parks
- Harwich International Port
- Bathside Bay
- Employment Sites
- Safeguarded Local Green Spaces sbx
- Proposed Green Infrastructure
- Cemeteries Crematorium Expansion Area
- nat_floodzone2_v201602
- nat_floodzone3_v201602
- Coastal Protection Belt
- RAMSAR_2016_TendingArea
- SPA_2016_TendingArea
- National Nature Reserve
- SPA_2016_TendingArea
- SSSI_2016_TendingArea
- Local Wildlife Sites (LoWS)
- Local Nature Reserves
- Dedham Vale Area of Outstanding Natural Beauty (AONB)
- Proposed Extension of Suffolk Coast and Heaths Area of Outstanding Natural Beauty (AONB)
- Conservation Area
- Scheduled Monuments
- Historic Parks And Gardens
- Ancient_Woodland
- Protected Lanes
- Areas of Special Character
- Walton Mere
- Article 4 Direction
- Safeguarding of Civil Technical Sites
- Ardreigh Reservoir Catchment Area



0 285 570 1,140 Meters



WEST TENDRING



KEY

- District Boundary
- Broad Area for Mixed Uses Allocation
- Settlement Development Boundary
- Housing Allocations
- Mixed Use Allocations
- Strategic Green Gaps
- Priority Areas for Regeneration
- All Neighbourhood Centres
- Primary Frontages - Policy
- Primary Shopping Areas
- Primary Frontages - Policy
- Secondary Shopping Frontages
- Safeguarded Holiday Parks
- Harwich International Port
- Bathside Bay
- Employment Sites
- Safeguarded Local Green Spaces sbx
- Proposed Green Infrastructure
- Cemeteries Crematorium Expansion Area
- nat_floodzone2_v201602
- nat_floodzone3_v201602
- Coastal Protection Belt
- RAMSAR_2016_TendringArea
- SPA_2016_TendringArea
- National Nature Reserve
- SSSI_2016_TendringArea
- Local Wildlife Sites (LoWS)
- Local Nature Reserves
- Dedham Vale Area of Outstanding Natural Beauty (AONB)
- Proposed Extension of Suffolk Coast and Heaths Area of Outstanding Natural Beauty (AONB)
- Conservation Area
- Scheduled Monuments
- Historic Parks And Gardens
- Protected Lanes
- Areas of Special Character
- Walton Mere
- Article 4 Direction
- Safeguarding of Civil Technical Sites
- Ardleigh Reservoir Catchment Area
- Historic Towns
- Proposed Strategic Road Links

0 225 450 900 Meters